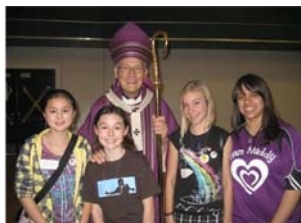


About the Program

The Edge is a Catholic middle school youth ministry for early adolescents in grades 6-8. It is designed by the Life Teen organization to meet the catechetical, educational, spiritual, emotional, and social needs of young adolescents.

Middle-school youth are brought into a large-group environment for gathering activities, teachings and prayer. In small groups, they break open the teachings and build solid, Christ-centered relationships that allow them to comfortably explore their Catholic faith and make it relevant to their everyday lives. This helps build safe relationships during some of the most formative years of a teen's life.

This creative and experiential approach engages youth to understand Catholic teaching and form their Catholic identity.



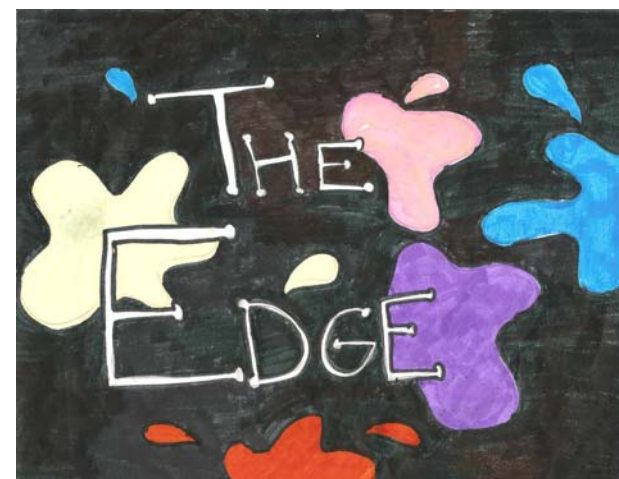
Our Church's Mission

We, the Parish of Mary, Queen of Peace, are a faith community, following the teachings of Jesus Christ, in the tradition of the Roman Catholic Church. We gather together, welcoming the spirit, united in our diversity, committed to peace through justice, as witness to our faith. We seek to be the family of God, by our active participation in stewardship through worship, education, service, social activities. Our lives will bear witness to our beliefs.



Mary, Queen of Peace Catholic Church

1121 228th Ave. S.E.
Sammamish, WA 98075
(425) 391-1178 Office
(425) 391-3797 Fax
www.MQP.org



Follow Mii

The Edge

(grades 6-8)

Join our Youth Group
FUN in faith filled
Community!



What is “The Edge”?

The Edge is a youth group program for 6-8th Graders at Mary, Queen of Peace Catholic Church in Sammamish.

Why is it called “The Edge”?

We subscribe to programming materials from a company called “Life Teen.” They came up with “The Edge” name for their middle school program, because it’s a time in a person’s life where you’re living on the edge of being a kid and being an adult. (Side note: Life Teen is the name of the grades 9-12 youth group)

What do you do at The Edge?

We start with a youth-oriented Mass at 5:00 pm on Sundays. Then nearly every week during the school year, we have dinner after Mass, and then our Edge night goes from 6:30 pm to 8:00 pm. You’ll join other teens in your grade and a small group leader (sometimes you’ll hear them referred to as “Core Team”) and start the night with all the other groups of teens. Each night has a theme. Each month we typically have two nights that focus on something to do with our Catholic faith, one “issue night” – about issues you face in every day life, and how our faith relates to them, and a service/social night. After an opening prayer, Sometimes our teens help with presentations by putting on skits, sharing a story, or lots of other creative things. After that, you’ll break up into your small groups to discuss the main topic.



Every semester the Edge youth decide where and how they want to make a difference. Their

mission is then incorporated, whenever possible, into the themes of each night. Together, we are Christ In Action.

Dates to Remember

Check www.mqp.org for fun activities and events to be added throughout the year!

July 12– 16	Edgestravaganza
September 25	Adult Volunteers Retreat
October 3	First Edge Night
October 31st	No Edge
November 28th	No Edge
December 11th	Edge Hosts “Nativity Story” movie night
December 19 & 26	No Edge
January 2	Edge resumes
January 16	No Edge
February 18	Game day 4 boys
February 19	Spa day for girls
February 20	No Edge
April 3	No Edge
April 24	Happy Easter! No Edge
May 1	“Moving Up” Night
May 15	The Edgy Awards!

Can I bring my friend who isn’t Catholic?

Absolutely! If you look “Catholic” up in the dictionary, it means, “universal in extent; involving all”. All are welcome. If your friend is just coming for one night, please ask them to bring \$5 if they want to join us for dinner. If you have a friend outside of our church who wants to come with you weekly, please pass along a registration form (available at www.mqp.org) and have them sign up—so that we can be fully prepared with all the stuff needed to make their experience awesome.

What else should I know?

You can play a part in making The Edge great, by joining our youth council. You can go to fun events (including mission trips) with other teens your age in the Archdiocese. And you’ll have the opportunity to serve others in a variety of ways with your fellow teens. Please contact Anne Ginther at edge@mqp.org or call her at 425-391-1178, ext. 129 for more information.

Parents...

You are more than welcome to visit any one of our Edge nights to see what it’s all about! We’re always looking for volunteers to chaperone outings, help with various events, or lead a small group throughout the year. Please contact Anne to learn more.



Anne Royse Ginther
The Edge Youth Minister
edge@mqp.org
425-391-1178, ext 129